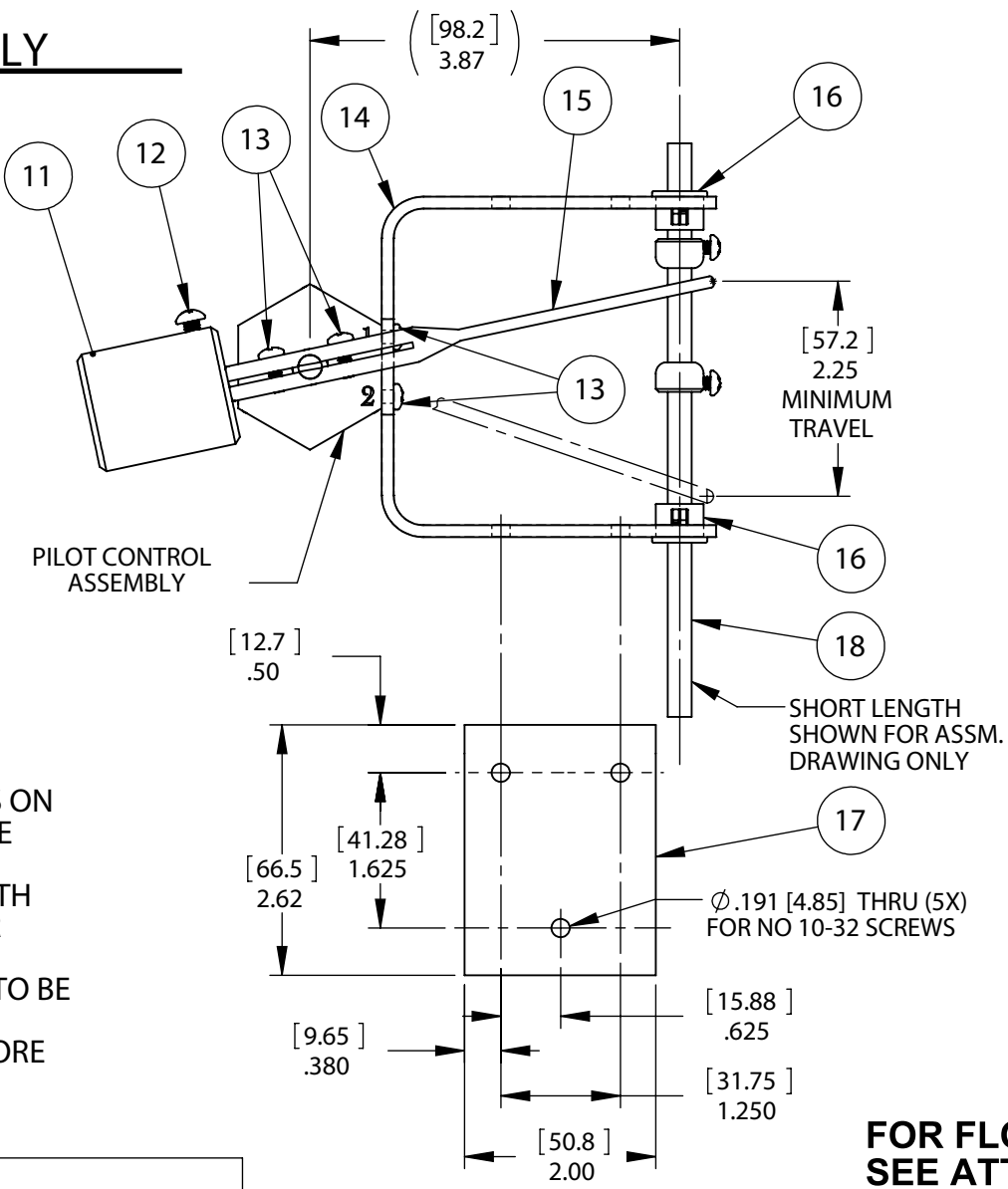
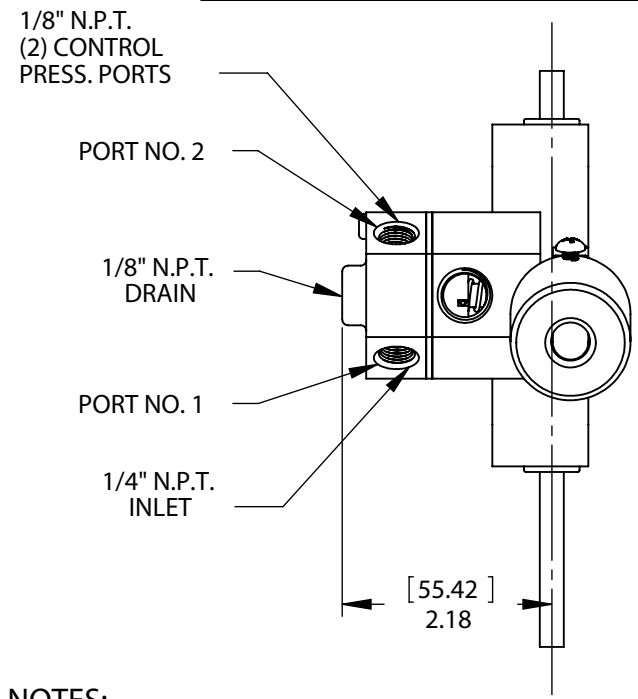


REPAIR PARTS KITS		
DESCRIPTION	PART NO.	
PILOT CONTROL REPAIR PARTS INCLUDES ITEM NO. 3 THRU 9	1074019 (348-IAB)	
	PORT 1	PORT 2
FLOAT UP	PRESSURED	VENTED
FLOAT DOWN	VENTED	PRESSURED

(F1) (G1)	LEVEL CONTROL ASSEMBLY	FLOAT ROD ASSEMBLY
	1074042 (348LC)	1074020 (348-K) (BRASS - 36")
	1074044 (348LCK)	1074026 (348-KK) (BRASS - 54")
	1074043 (348LCB)	1074028 (348-KL) (BR WELL - 36")
	1074047 (348LCX)	NO FLOAT OR ROD INCL.

REVISIONS					
ZONE	ECN	REV.	DESCRIPTION	DATE	APP'D
	103972	F	1-REM'D: 1074046, 2-REM'D: ITEM# 18-1074030, 3-REM'D: ITEM# 18-1074027, 4-REM'D: PG-3, (OPTIONAL) 36" & 54" SS FLOAT ROD ASSY, 5-UPDATED TITLE BLOCK	7-3-12	TJM
	104611	G	1-REM'D: 1074045, 2-REM'D: ITEM# 18-BR1074029, 3-REM'D: PG-3 (OPTIONAL) 36" PVC FLOAT ROD ASSY	12MAY15	TJM
	1001	H	AQ Matic Update & Part Number Verification	12MAY17	MGS
	1801	J	P/N 1074022 CHANGED TO 1074025, MINOR FORMAT CHANGES	11/9/2020	PMJ

### LEVEL CONTROL ASSEMBLY



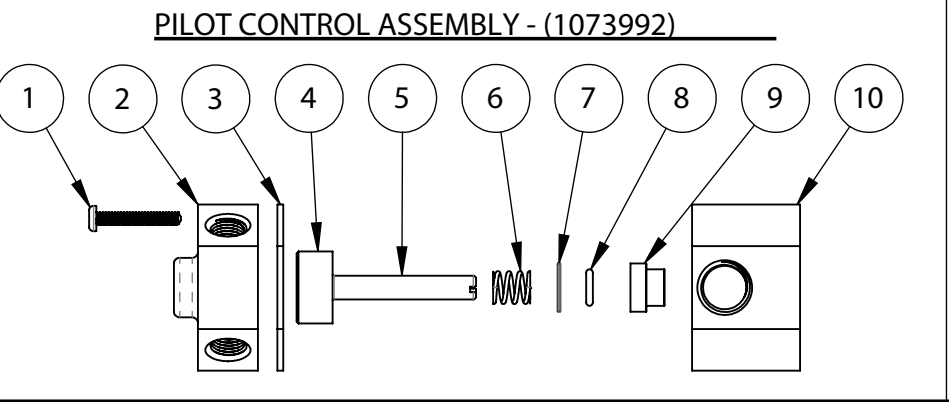
- NOTES:
1. WHEN REASSEMBLING, MAKE SURE THAT PORTS ON THE STEMPLATE (1074011) AND THE BACKPLATE (1073991) ARE ALIGNED
  2. SLOT IN THE STEMPLATE SHOULD BE IN LINE WITH SLOT IN THE LEVER ARM (1074034) FOR PROPER OPERATION.
  3. FASTENERS FOR OPTIONAL PART NO. 1074013 TO BE FURNISHED BY CUSTOMER.
  4. 2.25" [57MM] CHANGE IN LEVEL REQUIRED BEFORE PRESSURE /VENT SIGNALS ARE REVERSED ON CONTROL PORTS.

### PILOT CONTROL ASSEMBLY

ITEM NO.	PART NO.	DESCRIPTION	QTY.
1	1075759	SCREW, 6-32 X 7/8, PAN HEAD	3
2	1073991	BACKPLATE, 348, BRASS	1
3	1084171	GASKET, BACKPLATE, 48 STAGER	1
4	1074845	STEMPLATE, 48, ALPHA	1
5	1074010	STEMSHAFT ASSY, SERIES 348	1
6	1074822	SPRING, COMPRESSION, 348	1
7	1074074	WASHER, 302,SS	1
8	1071667	O-RING, 2-010	1
9	1073994	BUSHING, SHAFT, 348	1
10	1074009	BONNET, 348, BRASS	1

### LEVEL CONTROL ASSEMBLY

ITEM NO.	PART NO.	DESCRIPTION	QTY.
11	SEE SHEET 2	COUNTERWEIGHT	1
12	1072375	RD. HD. MACH SCREW, (8-32 X 1/2)	1
13	1072371	SCREW, PHLP, PN HD, 6-32 X 3/8", SS	4
14	1074012	BRACKET, 348	1
15	1074034	LEVER, 348	1
16	1074016	BUSHING	2
17	1074013	MOUNTING BRACKET (OPTIONAL)	1
18	1074020	FLOAT ROD ASS'Y	1
19	1074026	(SEE PAGES 2 - 3 FOR PARTS LIST)	1
20	1074028		1
21	1239443		1



**FOR FLOAT ROD ASSEMBLY OPTIONS, SEE ATTACHED SHEETS**

**SEIRES 348 LEVEL CONTROL FLOAT OPERATED VALVE**

COMPONENTS / ASSEMBLIES TO BE COMPLIANT AND COMPATIBLE WITH EUROPEAN UNION DIRECTIVE 2011/65/EEC (RoHS2) & REGULATION (EC)1907/2006 (REACH) REQUIREMENTS

THIS DOCUMENT IS SOLELY THE PROPERTY OF AQ Matic VALVE & CONTROLS COMPANY INC. REPRODUCTION, USE DISCLOSURE, OR TRANSMISSION OF THIS DOCUMENT OR DETAILS CONTAINED HEREIN, IN PART OR IN WHOLE, IS PROHIBITED WITHOUT THE WRITTEN CONSENT OF AQ Matic ENGINEERING. THIS DOCUMENT AND ANY COPIES SHALL BE RETURNED TO AQ Matic UPON REQUEST.

DO NOT SCALE DRAWING. DIMS. ARE IN INCHES [mm] INTERPRET DIMS AND TOLERANCES PER ASME Y14.5M -2009 UNLESS OTHERWISE SPECIFIED: ALL FINISHED MACHINED SURFACES 125 OR BETTER. TOLERANCES:  
 ANGLES: ± 1°  
 1 PLACE .X: ± .015 [0.38]  
 2 PLACE .XX: ± .01 [0.3]  
 3 PLACE .XXX: ± .005 [0.13]

THIRD ANGLE PROJECTION

APPROVALS: NE DATE: 07-02-12

DRAWN: NE

APPROVED:

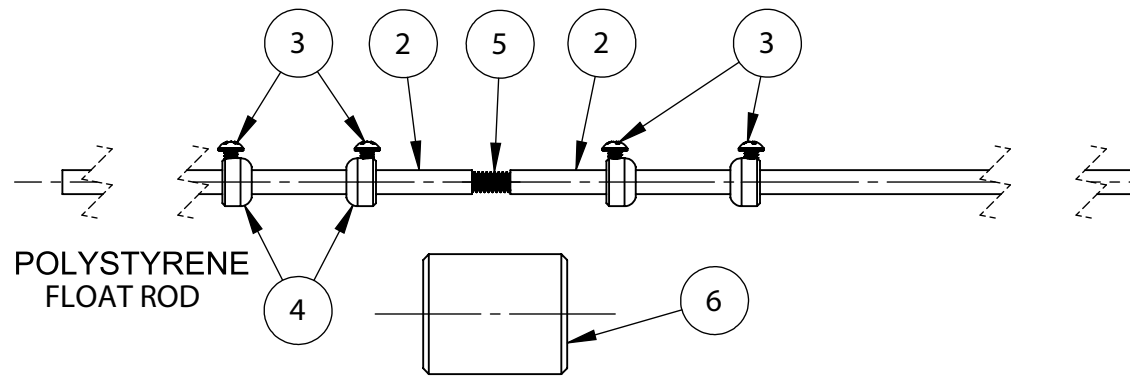
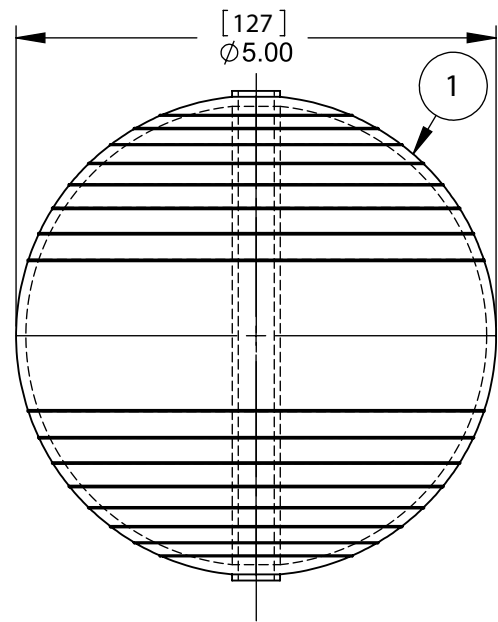
CHECKED:

Buy AQ Matic.com

TITLE: **FLOAT OPERATED LEVEL CONTROL, V420 FLOAT ROD ASSEMBLIES**

SIZE: B DWG NO. **1078193** REV J

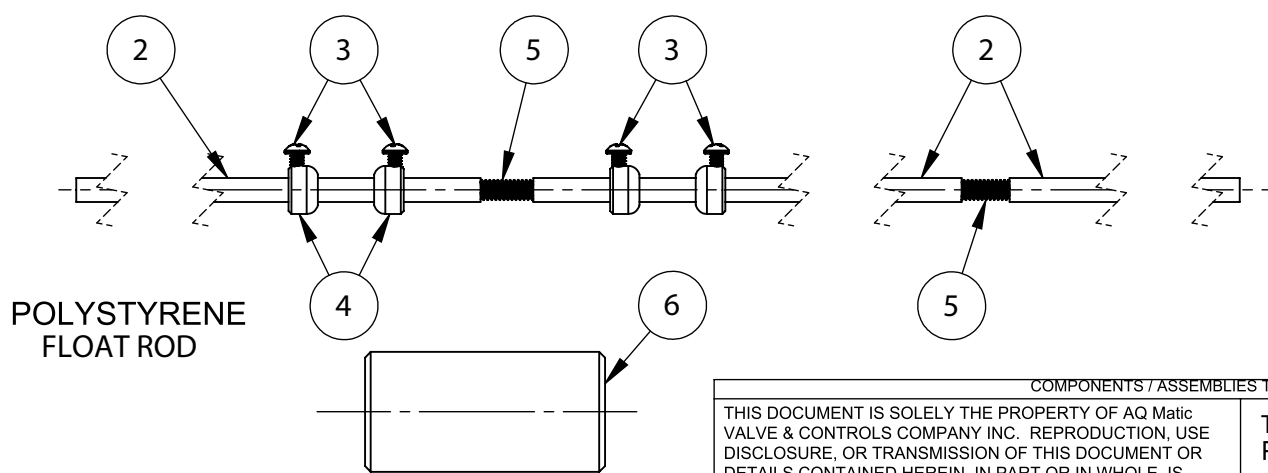
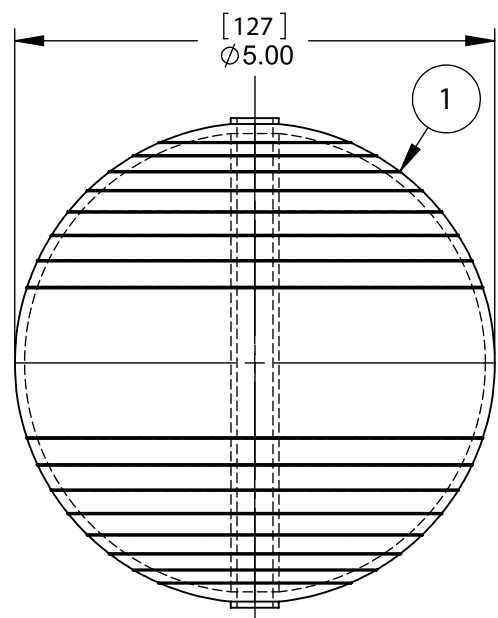
SCALE: 1:2 SHEET 1 OF 3



**36" (914 MM) FLOAT ROD ASSEMBLY -  
STANDARD LENGTH (1074020)**

**SERIES 420 DIAPHRAGM VALVES  
FLOAT ROD ASSEMBLIES**

**54" (1372 MM) FLOAT ROD ASSEMBLY -  
STANDARD LENGTH (1074020)**



REVISIONS					
ZONE	ECN	REV.	DESCRIPTION	DATE	APP'D
SEE SHEET 1 FOR LIST OF CHANGES.					

**STANDARD 36" FLOAT ROD ASSEMBLY 1074020**

ITEM NO.	PART NO.	DESCRIPTION	QTY.
1	1073996	FLOAT, SAND, 5"	1
2	1074023	TUBE, FLOAT ROD, BRASS 18" LG	2
3	1072370	RD. HD. MACH. SCREW, (6-32 X 1/4)	4
4	1074017	CENTERING COLLAR, BRASS	4
5	1074025	STUD, THRD, #12-24 UNC-2A, SS	1
6	1074014	COUNTERWEIGHT, STD	1

(G3)

**OPTIONAL 54" FLOAT ROD ASSEMBLY 1074026**

ITEM NO.	PART NO.	DESCRIPTION	QTY.
1	1073996	FLOAT, SAND, 5"	1
2	1074023	TUBE, FLOAT ROD, BRASS 18" LG	3
3	1072370	RD. HD. MACH. SCREW, (6-32 X 1/4)	4
4	1074017	CENTERING COLLAR, BRASS	4
5	1074025	STUD, THRD, #12-24 UNC-2A, SS	2
6	1074015	COUNTERWEIGHT, SPECIAL	1

COMPONENTS / ASSEMBLIES TO BE COMPLIANT AND COMPATIBLE WITH EUROPEAN UNION DIRECTIVE 2011/65/EEC (RoHS2) & REGULATION (EC)1907/2006 (REACH) REQUIREMENTS

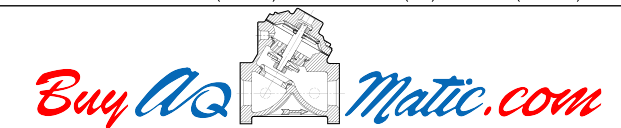
THIS DOCUMENT IS SOLELY THE PROPERTY OF AQ Matic VALVE & CONTROLS COMPANY INC. REPRODUCTION, USE DISCLOSURE, OR TRANSMISSION OF THIS DOCUMENT OR DETAILS CONTAINED HEREIN, IN PART OR IN WHOLE, IS PROHIBITED WITHOUT THE WRITTEN CONSENT OF AQ Matic ENGINEERING. THIS DOCUMENT AND ANY COPIES SHALL BE RETURNED TO AQ Matic UPON REQUEST.

DO NOT SCALE DRAWING. DIMS. ARE IN INCHES [mm]  
 INTERPRET DIMS AND TOLERANCES PER ASME Y14.5M -2009  
 UNLESS OTHERWISE SPECIFIED:  
 ALL FINISHED MACHINED SURFACES 125 √ OR BETTER.  
 TOLERANCES:  
 ANGLES: ± 1°  
 1 PLACE .X: ± .015 [0.38]  
 2 PLACE .XX: ± .01 [0.3]  
 3 PLACE .XXX: ± .005 [0.13]

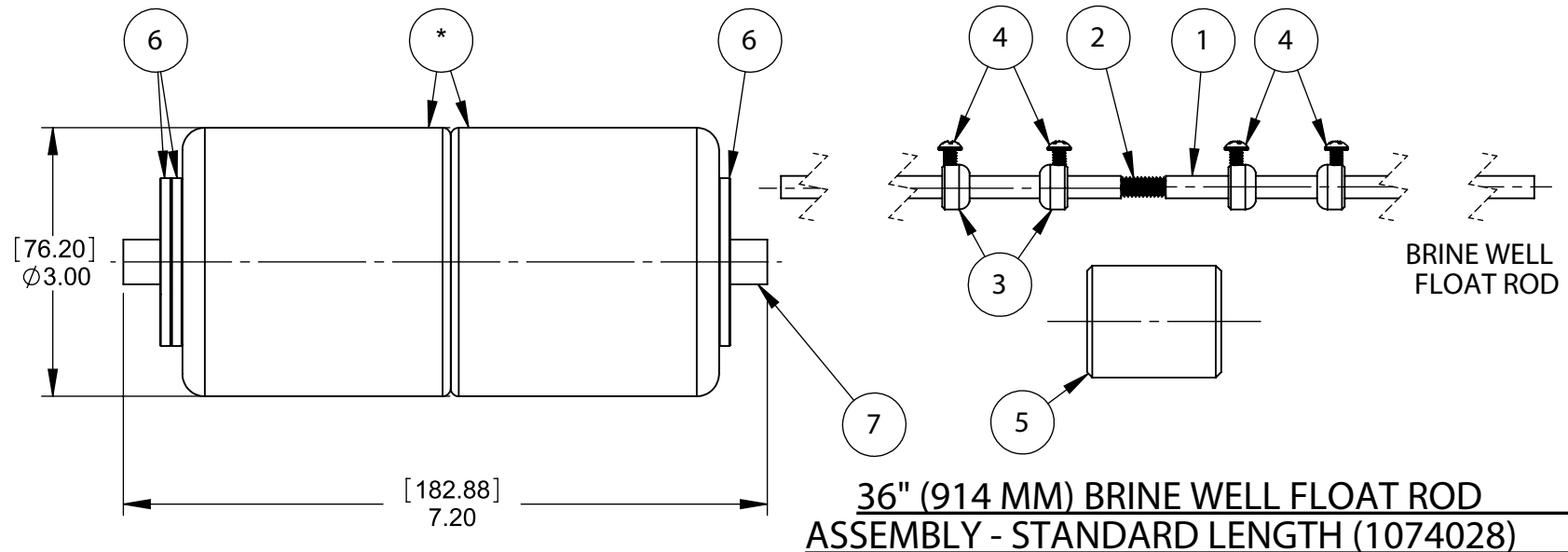
THIRD ANGLE PROJECTION



APPROVALS	DATE
DRAWN NE	07-02-12
APPROVED	
CHECKED	

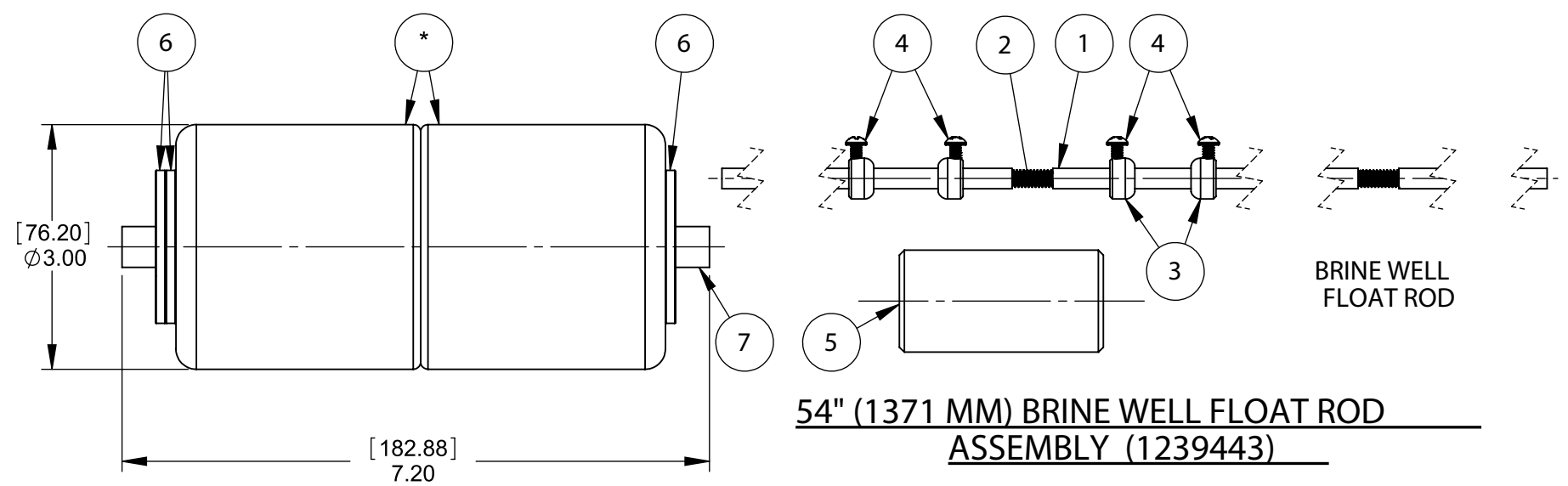


TITLE <b>FLOAT OPERATED LEVEL CONTROL, V420 FLOAT ROD ASSEMBLIES</b>			REV J
SIZE <b>B</b>	DWG NO. <b>1078193</b>		
SCALE 1:2	SHEET 2 OF 3		



**36" (914 MM) BRINE WELL FLOAT ROD ASSEMBLY - STANDARD LENGTH (1074028)**

**SERIES 420 DIAPHRAGM VALVES  
FLOAT ROD ASSEMBLIES**



**54" (1371 MM) BRINE WELL FLOAT ROD ASSEMBLY (1239443)**

REVISIONS					
ZONE	ECN	REV.	DESCRIPTION	DATE	APP'D
			SEE SHEET 1 FOR LIST OF CHANGES.		

**OPTIONAL 36" BRINE WELL FLOAT ROD ASSEMBLY  
1074028**

ITEM NO.	PART NO.	DESCRIPTION	QTY.
1	1074023	TUBE, FLOAT ROD, BRASS 18" LG	2
2	1074025	STUD, THRD, #12-24 UNC-2A, SS	1
3	1074017	CENTERING COLLAR, BRASS	4
4	1072370	RD. HD. MACH. SCREW, (6-32 X 1/4)	4
5	1074014	COUNTERWEIGHT, STD	1
6	1074032	WEIGHT, FLOAT, BRASS	3
7	1074036	TUBE, .50, BRASS	1

**OPTIONAL 54" BRINE WELL FLOAT ROD ASSEMBLY  
1239443**

ITEM NO.	PART NO.	DESCRIPTION	QTY.
1	1074023	TUBE, FLOAT ROD, BRASS 18" LG	3
2	1074025	STUD, THRD, #12-24 UNC-2A, SS	2
3	1074017	CENTERING COLLAR, BRASS	4
4	1072370	RD. HD. MACH. SCREW, (6-32 X 1/4)	4
5	1074015	COUNTERWEIGHT, SPECIAL	1
6	1074032	WEIGHT, FLOAT, BRASS	3
7	1074036	TUBE, .50, BRASS	1

COMPONENTS / ASSEMBLIES TO BE COMPLIANT AND COMPATIBLE WITH EUROPEAN UNION DIRECTIVE 2011/65/EEC (RoHS2) & REGULATION (EC)1907/2006 (REACH) REQUIREMENTS

THIS DOCUMENT IS SOLELY THE PROPERTY OF AQ Matic VALVE & CONTROLS COMPANY INC. REPRODUCTION, USE DISCLOSURE, OR TRANSMISSION OF THIS DOCUMENT OR DETAILS CONTAINED HEREIN, IN PART OR IN WHOLE, IS PROHIBITED WITHOUT THE WRITTEN CONSENT OF AQ Matic ENGINEERING. THIS DOCUMENT AND ANY COPIES SHALL BE RETURNED TO AQ Matic UPON REQUEST.

DO NOT SCALE DRAWING. DIMS. ARE IN INCHES [mm]  
INTERPRET DIMS AND TOLERANCES PER ASME Y14.5M -2009  
UNLESS OTHERWISE SPECIFIED:  
ALL FINISHED MACHINED SURFACES 125 ✓ OR BETTER.  
TOLERANCES:  
ANGLES: ± 1°  
1 PLACE .X: ± .015 [0.38]  
2 PLACE .XX: ± .01 [0.3]  
3 PLACE .XXX: ± .005 [0.13]

THIRD ANGLE PROJECTION

APPROVALS	DATE
DRAWN NE	07-02-12
APPROVED	
CHECKED	

**Buy AQ Matic.com**

TITLE  
**FLOAT OPERATED LEVEL CONTROL,  
V420 FLOAT ROD ASSEMBLIES**

SIZE **B** DWG NO. **1078193** REV **J**

SCALE 1:2 SHEET 3 OF 3